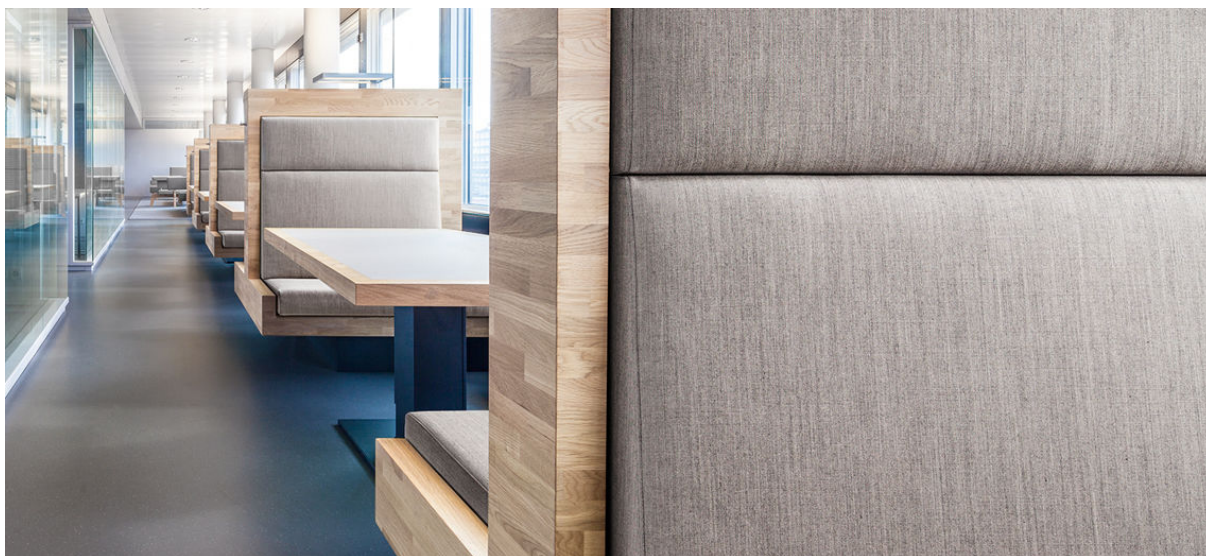


balta

7040.01 - 7040.19



binder

upholstery 01

description

semi-unpatterned fine wool blend

composition

80% wool / 20% polyamide

width

± 140 cm, ± 55 inches

weight

± 427 gr/m¹, ± 14 oz/yd¹ fabrics

flame retardancy

EN 1021/1-2

BS 5852, crib 5

DIN 4102, B2 + FR finish

UNI 9175, classe 1

Cal TB 117-2013

NFPA 260, classe 1

abrasion

ISO 12947-2

100.000 rubs martindale

ASTM D4157

100.000 double rubs wyzenbeek

pilling

ISO 12945-2

4 (scale 1-5)

ASTM D3511

4 (scale 1-5)

colorfastness to crocking

ISO 105-X12

wet 4-5 / dry 4-5 (scale 1-5)

AATC 8

wet 4-5 / dry 4-5 (scale 1-5)

colorfastness to light

ISO 105-B02

4-5 (scale 1-8)

AATCC 16.3: 40 hours

4-5 (scale 1-5)

seam slippage

ISO 13936 - 2

warp 3.5 mm / weft 4 mm

care



balta

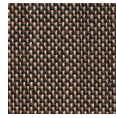
7040.01 - 7040.19



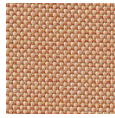
7040.01



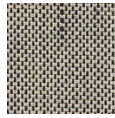
7040.06



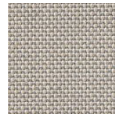
7040.09



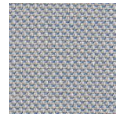
7040.04



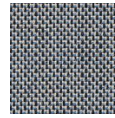
7040.03



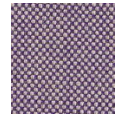
7040.14



7040.16



7040.17



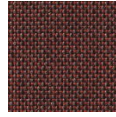
7040.18



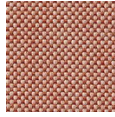
7040.02



7040.08



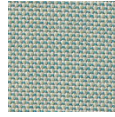
7040.10



7040.07



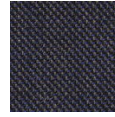
7040.05



7040.11



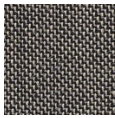
7040.12



7040.19



7040.15



7040.13