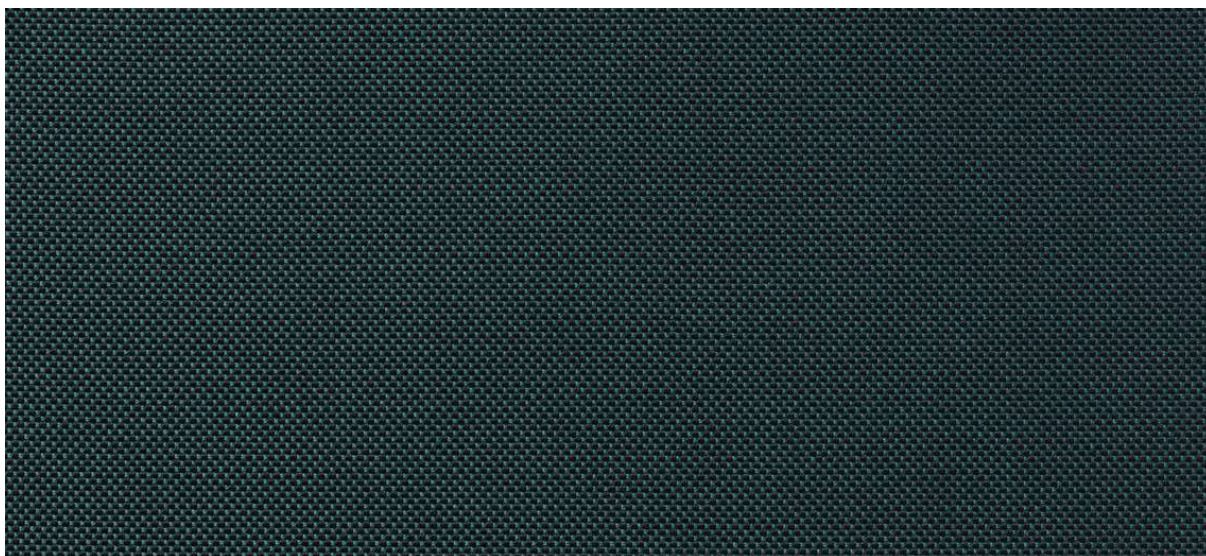


# cres

7010.01 - 7010.40



binder

**upholstery 02**

description

**fine micro-structure with iridescent effect in widely applicable, fresh colours**

composition

**100% flame retardant polyester**

width

**± 140 cm, ± 55 inches**

weight

**± 441 gr/m<sup>1</sup>, ± 14 oz/yd<sup>1</sup> fabrics**

flame retardancy

**EN 1021/1-2**

**BS 5852, crib 5**

**NF P 92/503-507, M1**

**DIN 4102, B1**

**IMO 2010 FTP part 8**

**UNI 9175, classe 1**

abrasion

**ISO 12947-2**

90.000 rubs martindale

pilling

**ISO 12945-2**

4 (scale 1– 5)

colorfastness to crocking

**ISO 105-X12**

wet 4-5 / dry 4-5 (schaal 1– 5)

colorfastness to light

**ISO 105-B02**

light 6 / dark 6-7 (scale 1 – 8)

seam slippage

**ISO 13936 – 2**

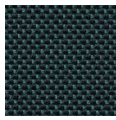
warp 2.7 mm / weft 3 mm

care



**cres**7010.01 - 7010.40

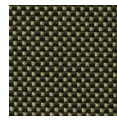
---



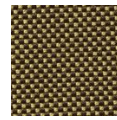
7010.01



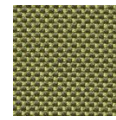
7010.03



7010.07



7010.08



7010.04



7010.05



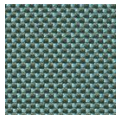
7010.22



7010.36



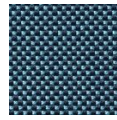
7010.33



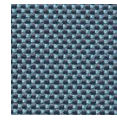
7010.02



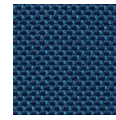
7010.11



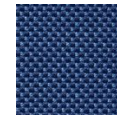
7010.10



7010.06



7010.09



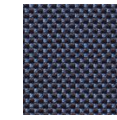
7010.13



7010.17



7010.14



7010.18



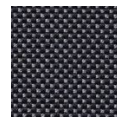
7010.20



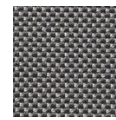
7010.19



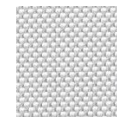
7010.12



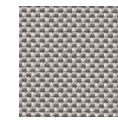
7010.15



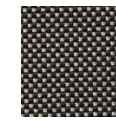
7010.21



7010.32



7010.16



7010.25



7010.37



7010.40



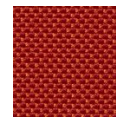
7010.39



7010.31



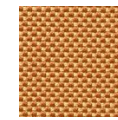
7010.28



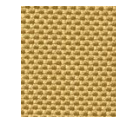
7010.30



7010.29



7010.27



7010.23



7010.26



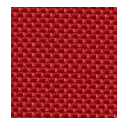
7010.38



7010.34



7010.35



7010.24