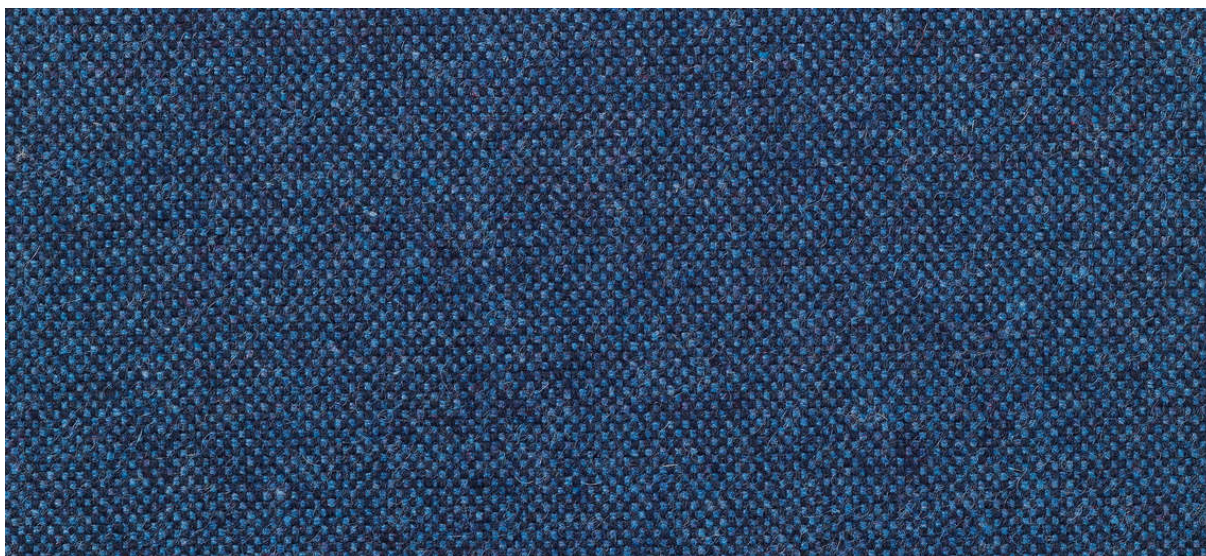


# wolin

7050.01 - 7050.47



binder

**upholstery 01**

description

**felted fine woven, wool quality, in a wide range of plain and mélangé colors**

composition

**75% wool / 20% polyester / 5% polyamide**

width

**± 150 cm, ± 59 inches**

weight

**± 638 gr/m<sup>1</sup>, ± 21 oz/yd<sup>1</sup> fabrics**

flame retardancy

**EN 1021/1-2**

**BS 5852, crib 5**

**NF P 92/503-507, M2**

**DIN 4102, B2**

**IMO 2010 FTP part 8**

**UNI 9175, classe 1**

**Cal TB 117**

abrasion

**ISO 12947-2**

>100.000 rubs martindale

**ASTM D4157**

100.000 double rubs wyzenbeek

pilling

**ISO 12945-2**

3-4 (scale 1-5)

**ASTM D3511**

4 (scale 1-5)

colorfastness to crocking

**ISO 105-X12**

wet 4-5 / dry 4-5 (scale 1-5)

**AATC 8**

wet 4-5 / dry 5 (scale 1-5)

colorfastness to light

**ISO 105-B02**

6 (scale 1-8)

**AATCC 16.3: 40 hours**

4 (scale 1-5)

seam slippage

**ISO 13936 - 2**

warp 3 mm / weft 3.4 mm

**ASTM D4034**

warp 82 lbf / weft 81 lbf

care



# wolin

7050.01 - 7050.47

